

# CDT COOPERATIVE STEWARDSHIP SPOTLIGHT: THE NATIONAL PARK SERVICE



## Partnership Accomplishments in 2023

- ✓ **Engaging with towns along the CDT**, such as East Glacier, where the rising popularity of National Parks and National Trails continues to impact the services, infrastructure, livelihoods, and culture of local communities.
- ✓ Ongoing work to **support Trail Information and visitor safety** across the CDT, particularly camping and vehicle reservations, bear safety, and trail conditions and access.
- ✓ **Hosted a volunteer trail project** in Yellowstone National Park improving the CDT experience through the park by maintaining tread, brushing the corridor, and improving a boardwalk.
- ✓ Partnership on the **Youth Hiking program at El Malpais National Monument** with the Zuni Youth Enrichment Project and the Acoma Learning Center to explore connections to the land.

- ✓ **Collaboration to complete the CDT** with BLM, Acoma, and NPS in central New Mexico to address major gap areas limiting access to and enjoyment of the trail experience.

- ✓ On National Public Lands Day in Grand County, the longest running celebration of stewardship in the U.S. for NPLD, CDTC partnered with **Headwater Trail Alliance** on projects in Rocky Mountain National Park and in the Gateway Community of Grand Lake.

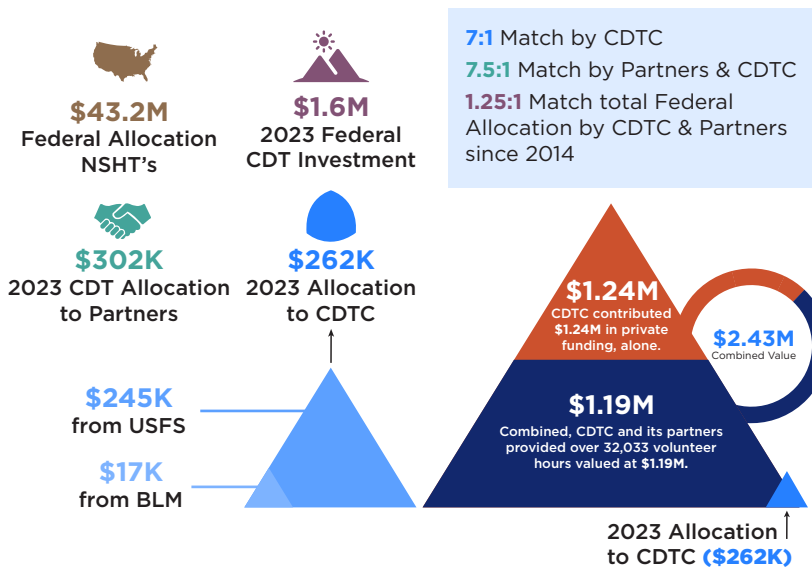
## Investment in Partners

In 2023, the federal agencies continued to invest in the Continental Divide Trail Coalition which included **\$245,000** from USFS and **\$17,214** from BLM to support trail planning, completion and youth corps projects, particularly in New Mexico and Colorado.

The combined **\$262,214** in public funding helped CDTC leverage an additional **\$1,243,000** and over **\$507,878** in volunteer labor.

Across the entire CDT, CDTC and its partners received a total of **\$285,000** from the USFS and produced over **32,033** volunteer hours valued at **\$1,018,900**.

In 2023, CDTC didn't receive funding from NPS however, we worked with NPS units trail wide.



CDTC has been working closely with NPS to complete and steward the CDT for **over 10-years**, and looks forward to continuing to build on past successes from this partnership. Of lands managed by the BLM, the CDT crosses 4 National Park Units, including El Malpais National Monument, Glacier NP, Rocky Mountain NP, and Yellowstone NP through the states of Montana, Idaho, Wyoming, Colorado, and New Mexico.



# FUTURE OPPORTUNITIES FOR COLLABORATION

In 2024 and the coming years, the U.S. Forest Service and CDTC have plans to continue to steward the trail collaboratively. Future projects and opportunities to improve the CDT Experience include:

**Expand opportunities to communicate with the CDT community** about information important to accessing and experiencing National Parks along the CDT by collaborating with Gateway Communities and other partners.

---

**Bolster information sharing between partners and National Parks** to keep each other informed on conditions on the CDT, such as the location of the “hiker bubble”, incidents reported on trail, and other data to steward the growing popularity of public lands.

---

**Collaboration between the Blackfeet Nation, National Park Service, and CDTC** to support information sharing and interpretation with CDT hikers traveling to-and-from the northern Terminus in Glacier National Park.

---

Highlight the unique positioning of **the intersection of the Continental Divide Trail and Canada’s Great Divide Trail** in the Waterton-Glacier International Peace Park.

